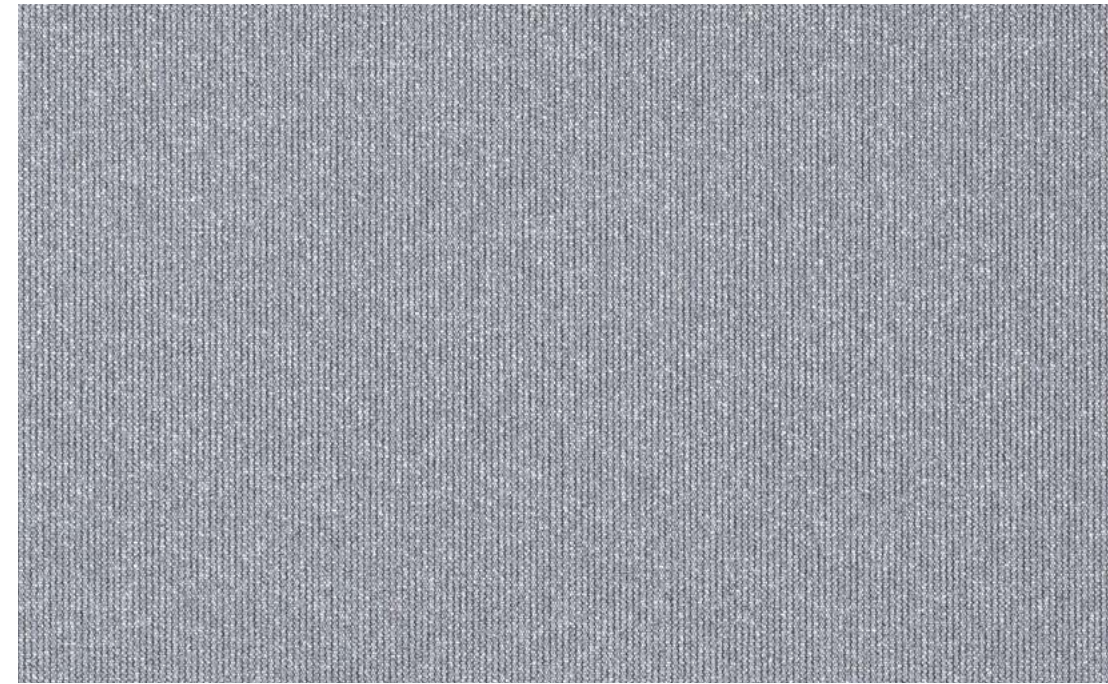




Nr. 122039000002101/Verosol



205 SilverScreen 4%

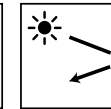
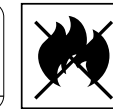
Good performance and view through

- High solar reflectance up to 77% provides convenient heat and light control
- Openness factor of 4% provides clear view through
- Suitable solution to reduce cooling and heating requirements in buildings
- Energy savings and indoor application result in low total cost of ownership

Verosol

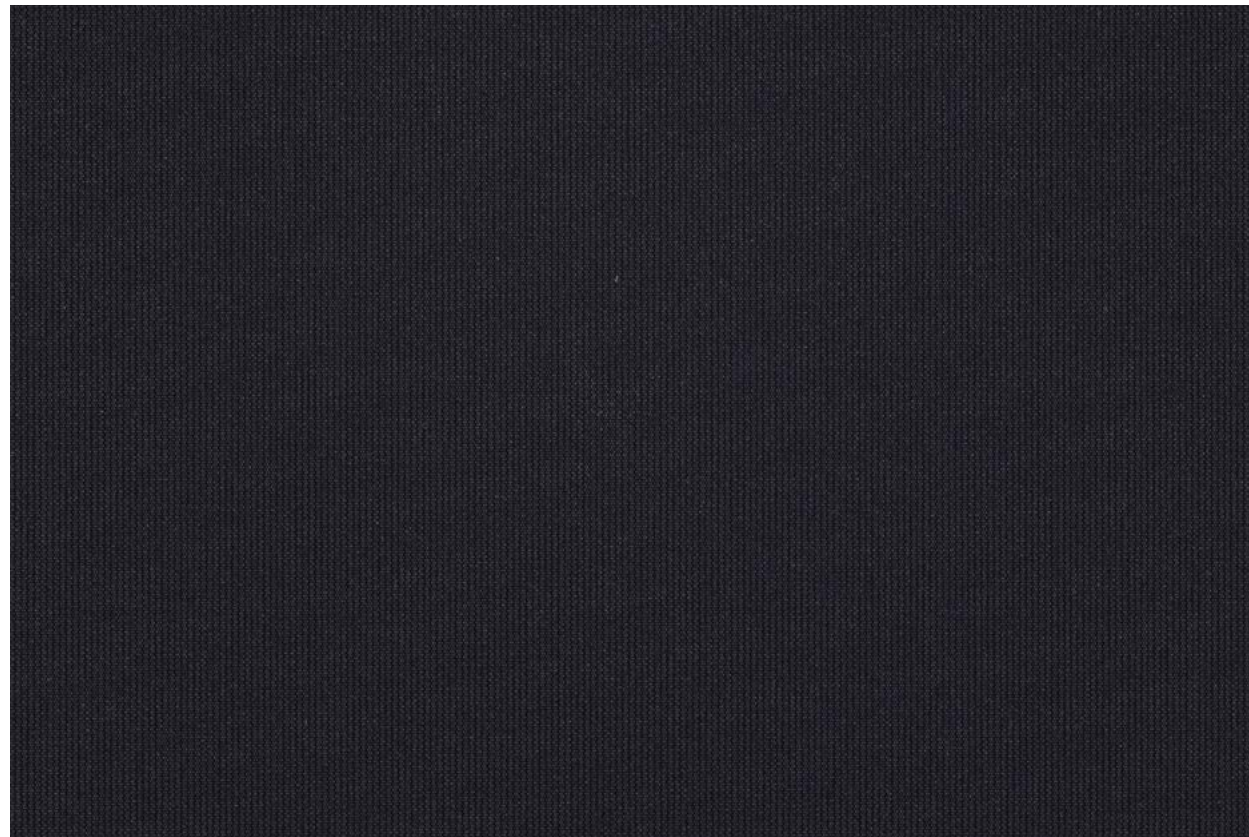


Management System
ISO 9001:2015
ISO 14001:2015
www.tuv.com
ID: 9186621700



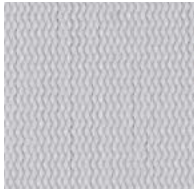



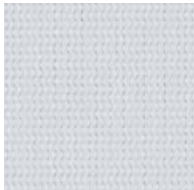
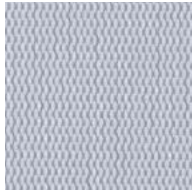

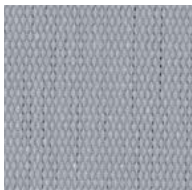


www.verosol.com

Transparencies



205 4% OF

Colours

 Beige ED02 (032)	 Dark Beige ED04 (034)	 Bronze EB03 (013)	 Chocolate Brown EB04 (014)
 White ED01 (031)	 Light Grey ED03 (033)	 Dark Grey EB02 (012)	
 Misty Grey EC01 (021)	 Steel Grey EC02 (022)	 Black EB01 (011)	

Specifications 205 SilverScreen 4%

	Openness factor	4%
	Thickness (mm)	0.49
	Weight (g/m ²)	400
	Width (cm)	320 max.
	Composition	64% PVC / 36% Glass
	IR emissivity (metal side)	0.13
	Flame retardant standards	EN 13501-1 C-s3,d0, BS 5867 part 2 type B, NFP 92503 M1, NFPA 701, AS/NZS 1530.3 (0-0-0-4)
	Environmental standards	GreenGuard (LEED), GreenGuard Gold, HPD2.1, RoHS2, REACH, Formaldehyde free

	White	Black	
	Solar reflectance outside	77%	76%
	Light transmission	5%	5%
	Visual contact according to EN 14501:2021	2	2
	Glare control rating according to EN 14501:2021	1	1

	Solar control double glass (Glazing G EN14501:2021)			Insulating double glass (Glazing F EN14501:2021)			
	Glazing performance	White	Black	Glazing performance	White	Black	
	Light Transmission LT value	70%	5%	5%	82%	5%	5%
	Solar heat gain g-value / SHGC	33%	11%	12%	65%	25%	26%
	Insulation U-value (W/m ² K)	1.0	0.70	0.70	1.1	0.74	0.74

	Solar control triple glass (Glazing I)			Insulating triple glass (Glazing H EN14501:2021)			
	Glazing performance	White	Black	Glazing performance	White	Black	
	Light Transmission LT value	64%	4%	4%	74%	5%	5%
	Solar heat gain g-value / SHGC	31%	13%	13%	53%	24%	25%
	Insulation U-value (W/m ² K)	0.6	0.48	0.48	0.7	0.55	0.55

Optical properties are measured according to EN 14500, ISO 9050, ASTM C1371 & EN 410. For more information about technical data, energy savings and worldwide distribution, refer to www.verosol.com. Disclaimer: The technical data is based on average data and is subject to production tolerances. Subject to misprints, errors and technical modifications. All technical details per colour available upon request.

The colours shown may vary from the supplied fabric due to batch variation in the production process. Please visit www.verosol.com to order samples of your choice.