

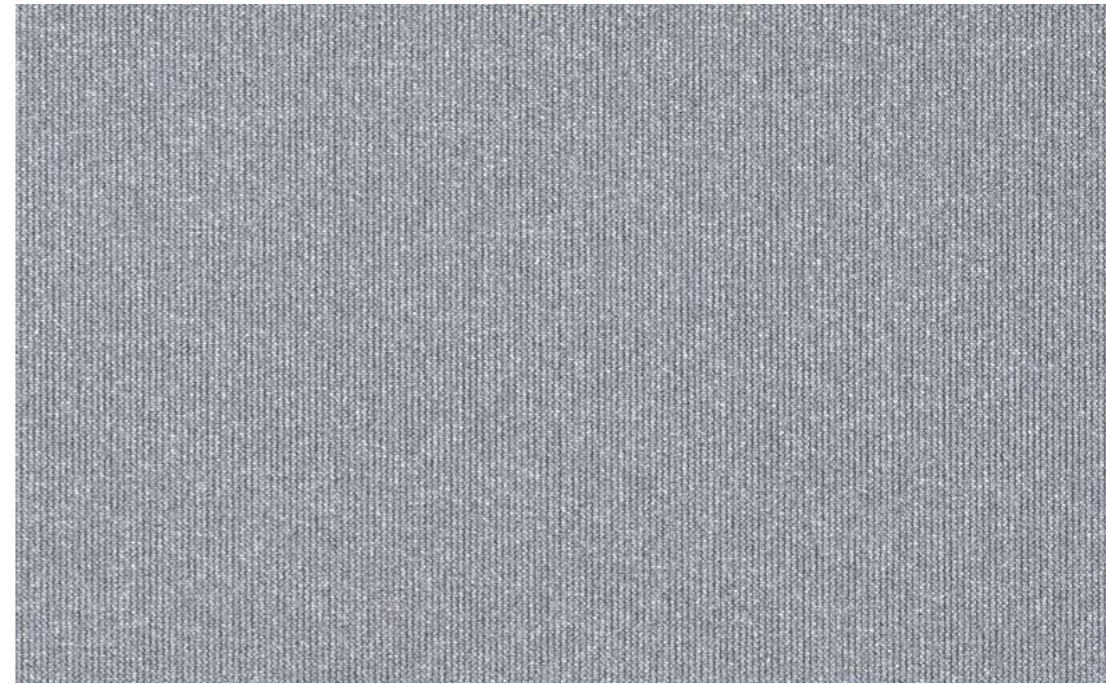


202 SilverScreen 2%

Ultimate solar heat and light control

- World's best solar reflectance: up to 85%
- Excellent insulation properties
- Savings in heating and cooling
- Low total cost of ownership

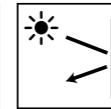
Nr. 122039000002101/Verosol



Verosol

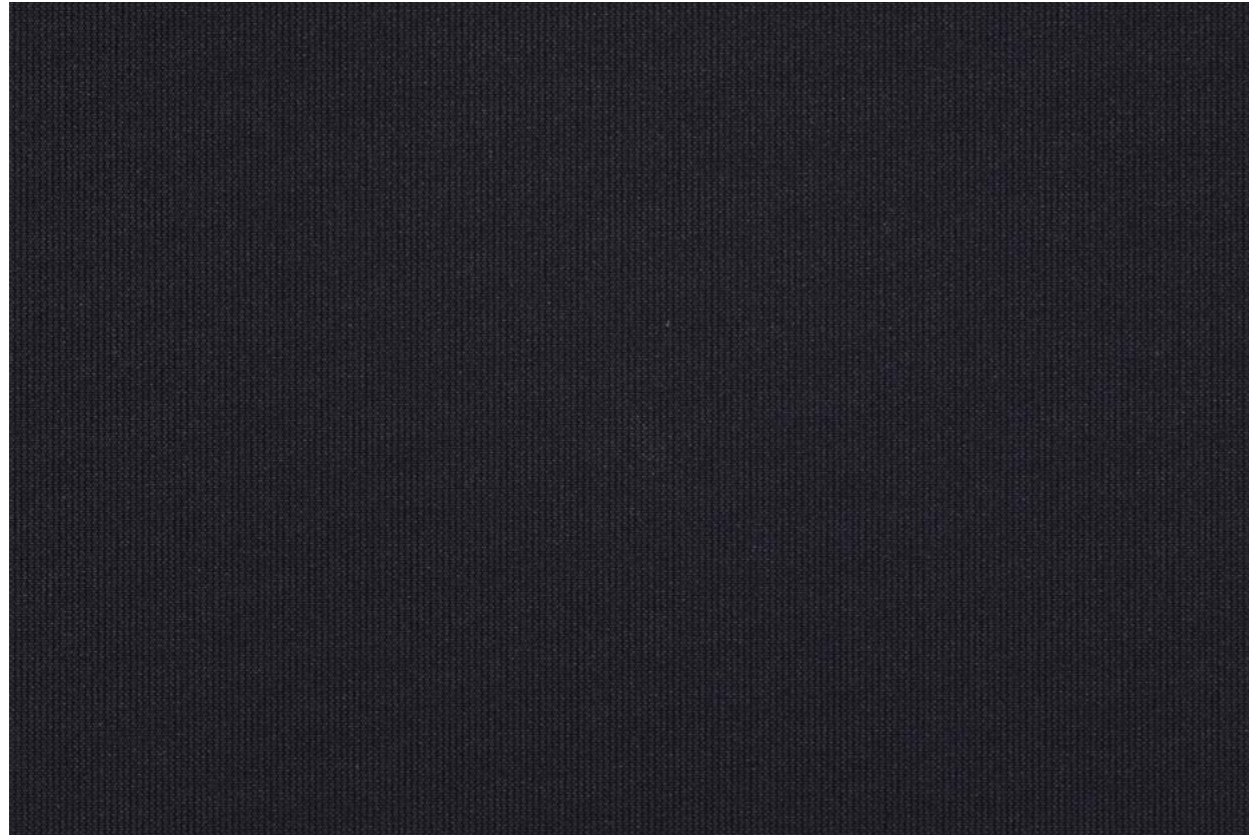


Management System
ISO 9001:2015
ISO 14001:2015
www.tuv.com
ID: 9186621700



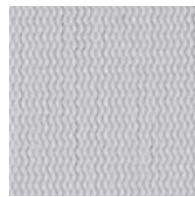
www.verosol.com

Transparencies

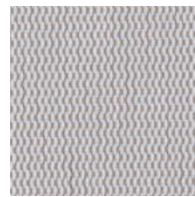


202 2% OF

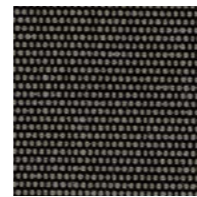
Colours



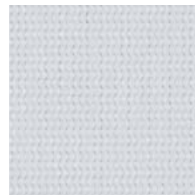
Beige
ED02 (032)



Dark Beige
ED04 (034)



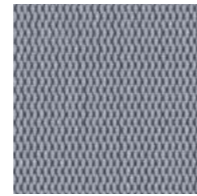
Bronze
EB03 (013)



White
ED01 (031)



Light Grey
ED03 (033)



Steel Grey
EC02 (022)



Dark Grey
EB02 (012)



Black
EB01 (011)

Specifications 202 SilverScreen 2%

	Openness factor	2%
	Thickness (mm)	0.46
	Weight (g/m ²)	400
	Width (cm)	280 max.
	Composition	64% PVC / 36% Glass
	IR emissivity (metal side)	0.03
	Flame retardant standards	EN 13501-1 C-s3,d0, BS 5867 part 2 type B, NFP 92503 M1, NFPA 701, AS/NZS 1530.3 (0-0-0-4)
	Environmental standards	GreenGuard (LEED), GreenGuard Gold, REACH, RoHS2, HPD2.1, Formaldehyde free

	White	Black	
	Solar reflectance outside	85%	85%
	Light transmission	3%	2%
	Visual contact according to EN 14501:2021	2	2
	Glare control rating according to EN 14501:2021	4'	4'

	Solar control double glass (Glazing G EN14501:2021)			Insulating double glass (Glazing F EN14501:2021)			
	Glazing performance	White	Black	Glazing performance	White	Black	
	Light Transmission LT value	70%	3%	2%	82%	3%	2%
	Solar heat gain g-value / SHGC	33%	8%	8%	65%	20%	20%
	Insulation U-value (W/m ² K)	1.0	0.65	0.65	1.1	0.68	0.68

	Solar control triple glass (Glazing I)			Insulating triple glass (Glazing H EN14501:2021)			
	Glazing performance	White	Black	Glazing performance	White	Black	
	Light Transmission LT value	64%	3%	2%	74%	3%	2%
	Solar heat gain g-value / SHGC	31%	10%	10%	53%	20%	20%
	Insulation U-value (W/m ² K)	0.6	0.45	0.45	0.7	0.51	0.51

Optical properties are measured according to EN 14500, ISO 9050, ASTM C1371 & EN 410. For more information about technical data, energy savings and worldwide distribution, refer to www.verosol.com. Disclaimer: The technical data is based on average data and is subject to production tolerances. Subject to misprints, errors and technical modifications. All technical details per colour available upon request.
*Cut off angle ≤65°, so upgrade with 1 class according to EN14501:2021.

The colours shown may vary from the supplied fabric due to batch variation in the production process. Please visit www.verosol.com to order samples of your choice.