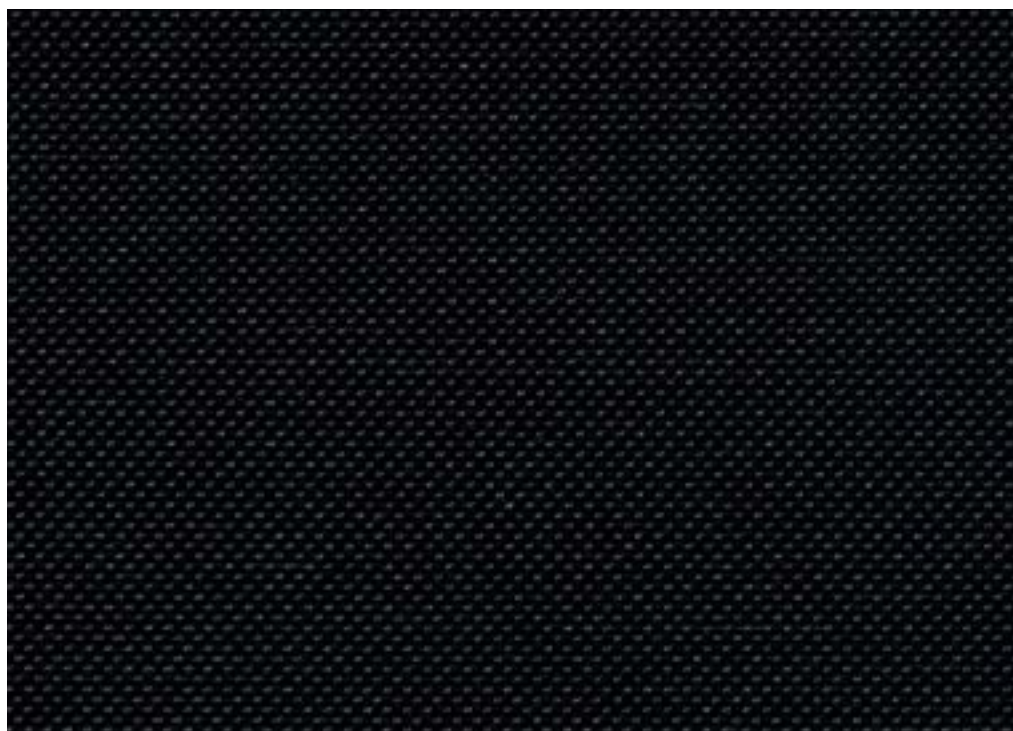


Silvretta Louise Sigvardt

Openness factor 3%
Solar reflection 62%
Metallised woven textile



kvadrat shade

Specification details

Openness factor	3%
Composition	100% polyester, aluminium backing
Fabric width	Max. 310 cm (122 inches)*
Weight	250 g/m ²
Thickness	0.44 mm
IR emissivity metal side	0.32
Light fastness	Interior 6-7, Exterior 7 (ISO105-B02)
Fire tests	EN 13501-1 (B-s1, d0), BS 5867 part 2 type B, GB 8624 B1, DIN 4102 B1, NFPA 701, EN 13773 class 1
Environment	GREENGUARD Gold, STANDARD 100 Class IV by OEKO-TEX®, Environmental Product Declaration (EPD), Health Product Declaration (HPD). Comply with REACH and RoHS. Free of intentionally added PFAS. Halogen free, Phthalate free, Formaldehyde free, Antimicrobials free, PVC free.
View through rate	Black: Excellent visibility / All other colours: Good visibility (according to ITA RWTH Aachen University)

Technical details

Colour	Optical properties acc. to EN 14500:2021 and EN 14501:2021						
	Number	Rs (%)	Ts (%)	Tv (%)	Tuv (%)	Ra	Glare control rating
	110	62	7	7	5	99	2
	130	62	6	6	4	98	3
	140	62	5	5	4	99	3
	160	62	4	4	4	99	3
	190	62	6	4	4	99	3
	220	62	6	6	4	96	3
	430	62	6	6	4	92	3
	530	62	6	5	4	89	3

Colour	Solar control double glazing G			Solar control triple glazing I			
	Number	gtot/SHGC (%)	Utot-value (W/m ² K)	Tv, tot (%)	gtot/SHGC (%)	Utot-value (W/m ² K)	Tv, tot (%)
	110	16	0.76	6	17	0.51	5
	130	16	0.76	5	17	0.51	4
	140	16	0.76	4	17	0.51	4
	160	16	0.76	3	17	0.51	3
	190	16	0.76	3	17	0.51	3
	220	16	0.76	5	17	0.51	5
	430	16	0.76	5	17	0.51	5
	530	16	0.76	4	17	0.51	4

Rs: Solar reflection | **Ts:** Solar transmission | **As:** Solar absorption calculation: 100 - Rs - Ts = As

Tv: Visual light transmission | **Tuv:** UV transmission | **Ra:** Colour rendering index

Glazing G: g=33% / U=1.0 / Tv=70% (acc. to EN14501: 2021) | **Glazing I:** g=31% / U=0.6 / Tv=64% (with ref. panes acc. to EN 14501:2021)

gtot/SHGC: Solar heat gain through total fenestration | **Utot:** Thermal heat loss (or gain) through total fenestration

Tv, tot: Total light transmission through total fenestration

*Widths up to 280 cm (110 inches) are available from stock for mock-ups and sampling.

These are approximate values. Individual results may vary slightly. The technical data are based on average data and are subject to production tolerances. Subject to misprints, errors and technical modifications.

Silvretta



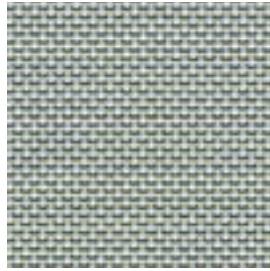
530



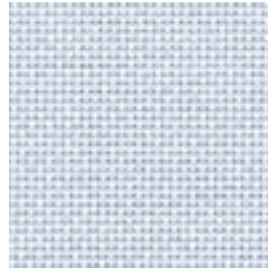
220



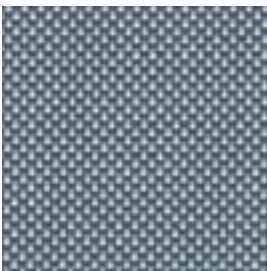
430



130



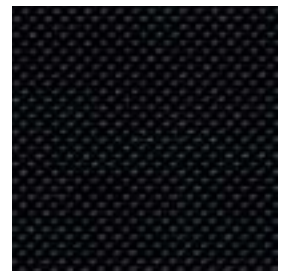
110



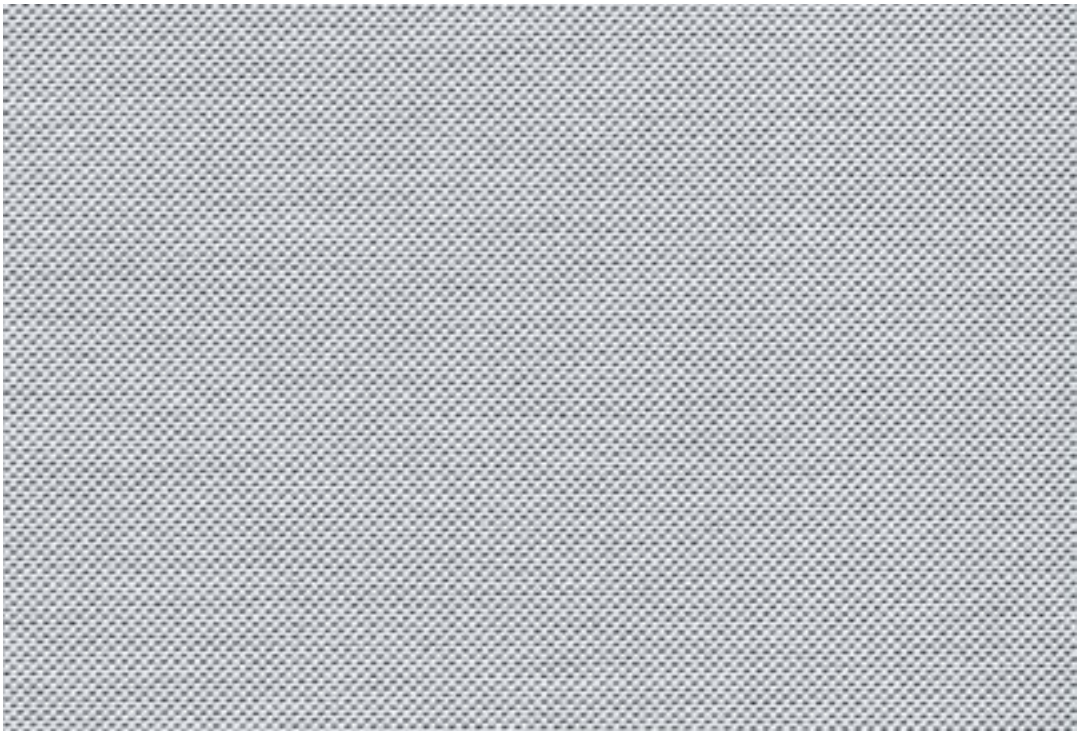
140



160



190



Silvretta

Design: Louise Sigvardt

DK

Anvendelse Rullegardin.

Beskrivelse 100% polyester. Alubelægning. Bredde max. 310 cm¹. Vægt 250 g/m².

Tykkelse 0.44 mm. Garnfarvet.

Nuanceforskel kan forekomme.

Lysægted Interiør 6-7. Udvendigt 7 (ISO 105-B02).

Flammesikring EN 13501-1 (B-s1, d0), BS 5867 part 2 type B, GB 8624 B1, DIN 4102 B1, NFPA 701, EN 13773 class 1 (Kopi af testrapport kan rekvireres).

Vedligeholdelse Se ISO symboler. Kan børstes eller støvsuges (laveste sugkraft) med børstemundstykke. Ved kraftigere tilsmudsning anbefales det at kontakte et professionelt renseri.

UK

Application Roller blind.

Description 100% polyester. Aluminium backing. Width max. 310 cm (122 inches)¹. Weight 250 g/m². Thickness 0.44 mm.

Yarn dyed. Colour differences may occur.

Lightfastness Interior 6-7. Exterior 7. (ISO 105-B02)

Flame resistance EN 13501-1 (B-s1, d0), BS 5867 part 2 type B, GB 8624 B1, DIN 4102 B1, NFPA 701, EN 13773 class 1 (Copy of test report available).

Care See ISO symbols. Can be brushed or carefully vacuumed (lowest suction power) with a brush nozzle. In case of considerable staining, we recommend contacting a professional dry cleaner.

DE

Anwendungsbereich Rollos.

Beschreibung 100% Polyester.

Alubedampft. Breite max. 310 cm¹. Gewicht 250 g/m². Dicke 0.44 mm. Garngefärbt.

Farbunterschiede können vorkommen.

Lichtechtheit Innen 6-7. Äußeres 7. (ISO 105-B02)

Flammschutz EN 13501-1 (B-s1, d0), BS 5867 part 2 type B, GB 8624 B1, DIN 4102 B1, NFPA 701, EN 13773 class 1 (Testbericht verfügbar).

Pflege Siehe ISO Pflegesymbole. Reinigung durch vorsichtiges Abbürsten oder saugen mit Bürstenaufsatz und niedrigste Saugleistung möglich. Bei starker Verschmutzung empfehlen wir einen professionellen Reinigungsdienst.

NL

Toepassing Rolgordijn.

Omschrijving 100% polyester. Aluminium backing. Breedte max. 310 cm¹. Gewicht 250 g/m². Dikte 0.44 mm. Garengerverd. Kleurverschillen kunnen optreden.

Lichtechtheid Interieur 6-7. Exterieur 7. (ISO 105-B02)

Brandwerendheid EN 13501-1 (B-s1, d0), BS 5867 part 2 type B, GB 8624 B1, DIN 4102 B1, NFPA 701, EN 13773 class 1 (Op aanvraag sturen wij u graag een kopie van het testrapport).

Onderhoud Zie de ISO symbolen. Kan schoongemaakt worden door middel van een borstel of een stofzuiger met borstelstuk op laagste zuigkracht. In het geval van serieuze vlekvorming, raden we aan contact op te nemen met een professionele reiniger.

FR

Domaine d'utilisation Store.

Description 100% polyester. Enduit aluminium. Largeur max. 310 cm¹. Poids 250 g/m².

Épaisseur 0.44 mm. Teinture sur fil.

Écart des coloris possibles.

Résistance à la lumière Intérieur 6-7. Extérieur 7. (ISO 105-B02)

Normes au feu EN 13501-1 (B-s1, d0), BS 5867 part 2 type B, GB 8624 B1, DIN 4102 B1, NFPA 701, EN 13773 class 1 (La copie du compte rendu des tests est disponible sur demande).

Entretien Voir les symboles ISO. Le tissu peut être brossé ou aspiré avec soin (puissance d'aspiration minimale) avec un embout en forme de brosse. Dans le cas où le tissu a été fortement taché, nous suggérons de contacter un pressing professionnel.

IT

Destinazione d'uso Tende a rullo.

Caratteristiche 100% poliestere. Rifinito sul retro con alu. Altezza max. 310 cm¹.

Peso 250 g/m². Spessore 0.44 mm. Tinto in filo. Possibili differenze per colore.

Resistenza alla luce Interno 6-7. Esterno 7. (ISO 105-B02)

Ignifugazione EN 13501-1 (B-s1, d0), BS 5867 part 2 type B, GB 8624 B1, DIN 4102 B1, NFPA 701, EN 13773 class 1 (Disponibile copia del test).

Manutenzione Per favore seguire simboli ISO. Può essere spazzolato oppure accuratamente aspirato (potenza di aspirazione minima) con un ugello a spazzola. In caso di macchie considerevoli, si consiglia di contattare un lavasecco professionale.

ES

Aplicación Estor.

Descripción 100% poliéster. Reverso de aluminio. Anchura max. 310 cm¹. Peso 250 g/m². Grosor 0.44 mm. Teñido en hilo.

Posibles variaciones de color.

Resistencia a la luz Interior 6-7. Exterior 7. (ISO 105-B02)

Resistencia al fuego EN 13501-1 (B-s1, d0), BS 5867 part 2 type B, GB 8624 B1, DIN 4102 B1, NFPA 701, EN 13773 class 1 (Copia del informe de ensayos disponible).

Limpieza Consulte los símbolos ISO. Se puede cepillar o aspirar con cuidado (potencia de succión más baja) con una boquilla de cepillo. En caso de manchas considerables, recomendamos contactar con un profesional de limpieza.

SE

Användning Rullgardin.

Beskrivning 100% polyester.

Aluminiumbaksida. Bredd max. 310 cm¹.

Vikt 250 g/m². Tjocklek 0.44 mm. Garnfärgad.

Viss nyansskillnad kan förekomma.

Ljushållighet Interiör 6-7. Exteriör 7. (ISO 105-B02)

Flammskydd EN 13501-1 (B-s1, d0), BS 5867 part 2 type B, GB 8624 B1, DIN 4102 B1, NFPA 701, EN 13773 class 1 (Kopia av testrapport finns tillgänglig vid förfrågan).

Underhåll Se ISO symboler. Kan borstas eller dammsugas försiktigt (lägsta sugkraft) med ett borstmunstycke. I händelse av fläckar rekommenderar vi att du lämnar in rullgardinen till kemtvätt.

ZH

产品应用 遮光卷帘。

产品详情 100% 聚酯纤维。铝涂层背膜。幅宽：最宽310厘米。克重：250克/平方米。厚度：0.44毫米。色织。可能出现色差。

日晒色牢度 内层：6-7。外层：7 (ISO 105-B02)。阻燃级别 欧洲标准EN 13501-1 (B-s1, d0)，英国标准BS 5867 第2部分 B级，中国标准GB 8624 B1，德国标准DIN 4102 B1，美国标准NFPA 701，欧洲标准EN 13773 1级。（可提供检测报告副本）。

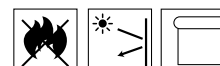
保养须知 请参照ISO标识。可用软毛刷或配备软毛刷吸头的吸尘器（最低吸力档位）进行清洁。如脏污较严重，建议联系专业干洗服务。



Contact and further information kvadrat.dk



STANDARD 100
15.HNL.57853
Hohenstein



5 year warranty

Silvretta

Silvretta by Louise Sigvardt is a woven, yarn-dyed textile made using up to three differently coloured yarns, creating a rich and natural expression. The refined weave adds depth and visual interest when viewed both up close and from a distance. With a metallised backing, *Silvretta* supports a good view out while controlling glare and limiting solar heat gain, helping to manage daylight, and visual and thermal comfort.

Silvretta is part of the Retta family, together with the screen textile *Retta* and the light-excluding textile *Retta Blockout*. The family offers a complementary range of roller blind solutions, combining a shared woven character with different levels of light and solar control.

Louise Sigvardt

Louise Sigvardt is a co-founder of the acclaimed Bunn Studio, working across fashion, architecture, and design. In recent years, they have collaborated with the celebrated fashion brands Everlane and Marimekko, and the furniture house Radnor. Their work has been recognised with numerous awards and showcased in leading international magazines.

Louise's background as a textile designer is evident in Bunn's rich yet minimal approach to design where texture is always a key element. For Louise, design is an immersive experience that begins with a narrative, an emotion or a captivating visual. She cites the application of textiles as the motivation in her career; *"I found out that I loved working with textiles, but what fascinates me even more, are all the different areas of application."*