

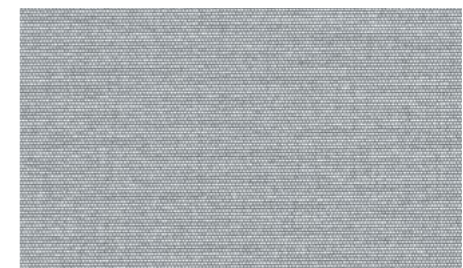
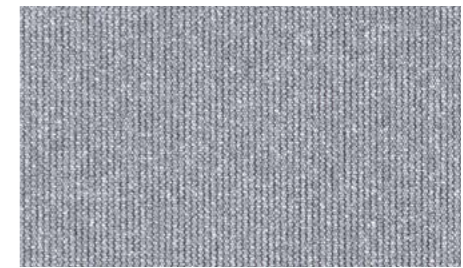
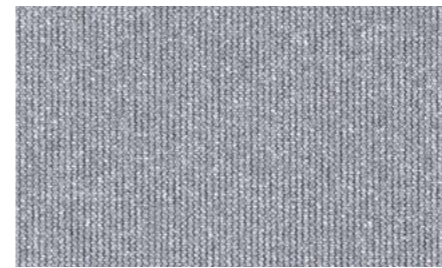
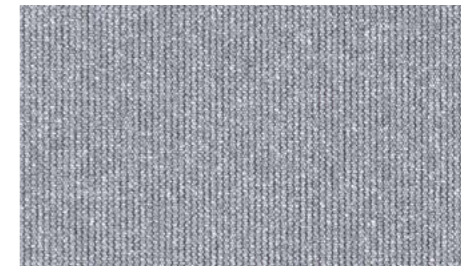
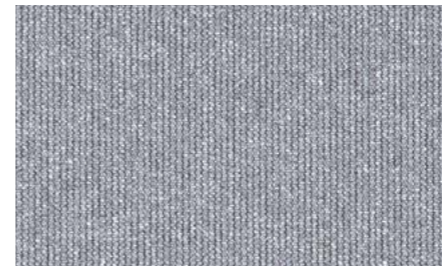


Originals

Infinite possibilities

- Numerous product types and applications
- Transparencies ranging from transparent to blackout
- Wide colour range
- Flame retardant
- Heat and glare control

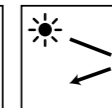
Nr. 122039000002002/Verosol



Verosol

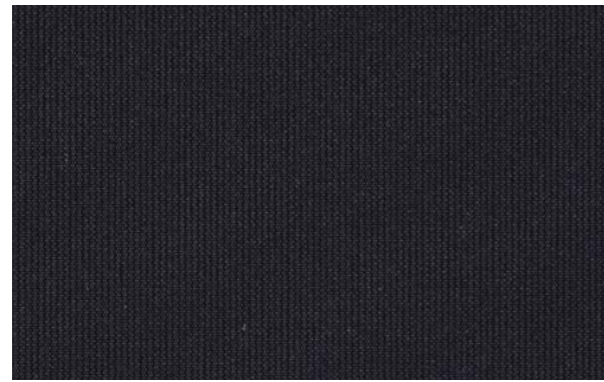


Management System
ISO 9001:2015
ISO 14001:2015
www.tuv.com
ID: 9186621700



www.verosol.com

Transparencies



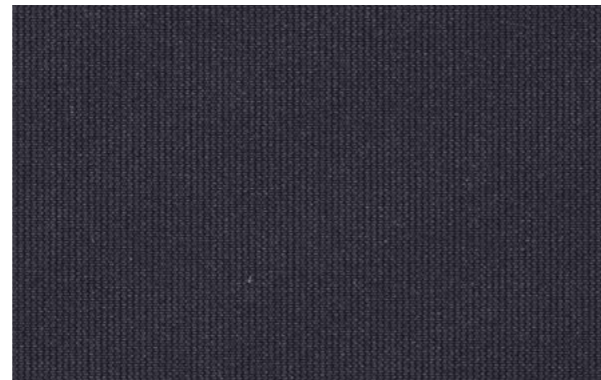
816 23% OF



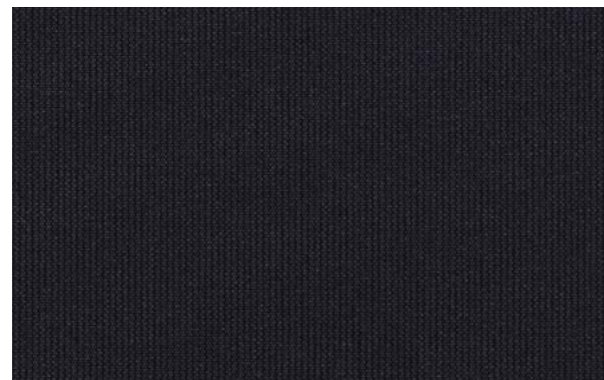
812 5% OF



849 2% OF

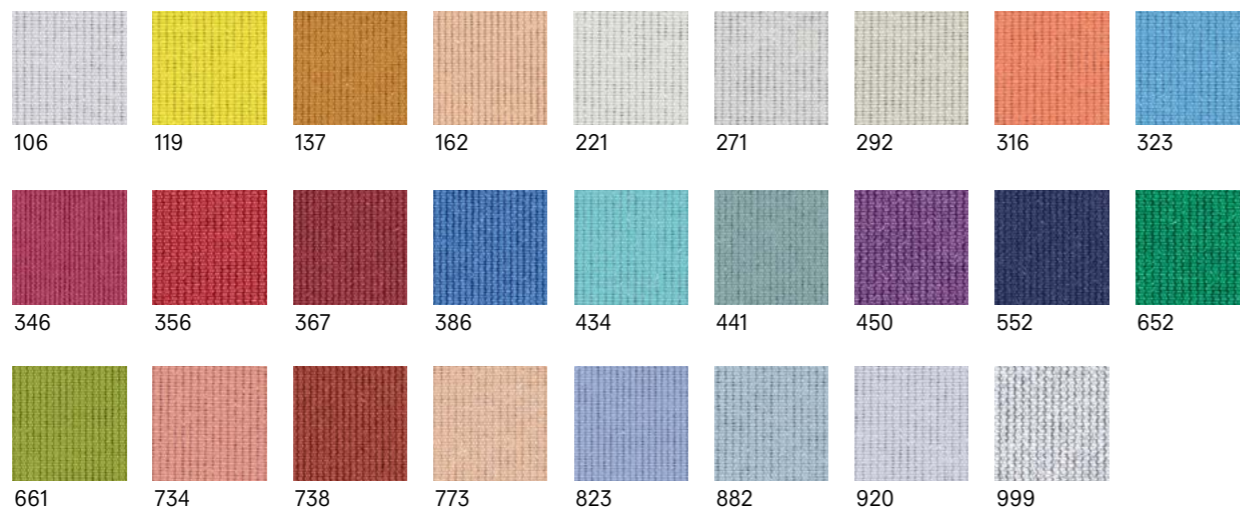


878 0% OF



890 0% OF Available in six colours See underlined colour numbers

Colours



Specifications Originals

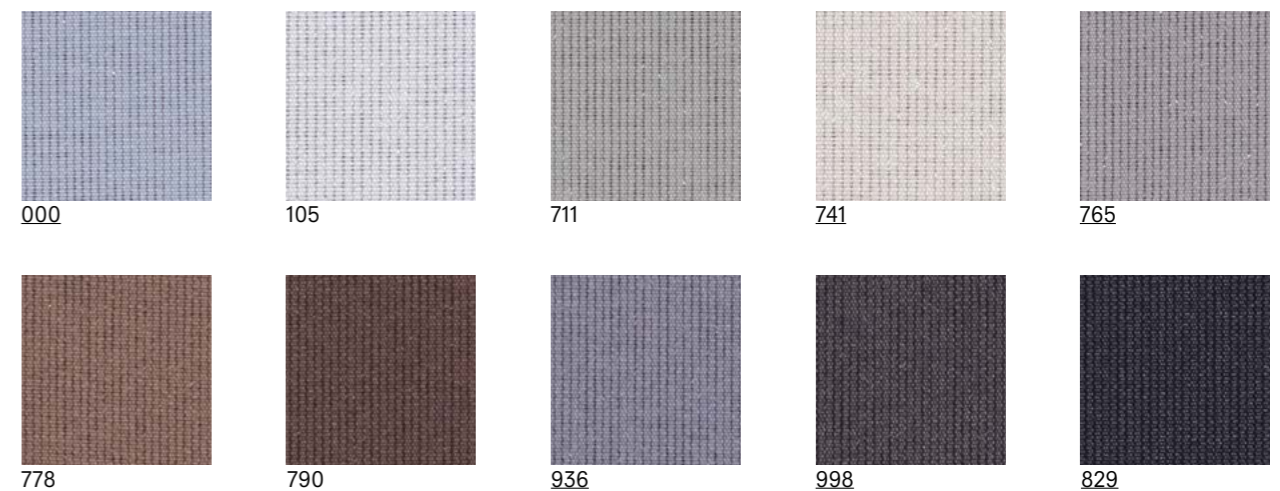
	816	812	849	878	890
Thickness (mm)	0.20	0.19	0.26	0.22	0.31
Weight (g/m ²)	73	94	125	140	315
Width (cm)	240	240	240	240	240
Composition	Trevira CS Trevira CS Trevira CS Trevira CS Polyester				
Flame retardant standards	DIN 4102 B1, BS 5867 part 2 type B, NFPA 701, AS/NZS 1530.3 (0-0-0-2)				
Environmental standards	OEKO-TEX Standard 100 Class IV, HPD 2.1, RoHS2, REACH, GreenGuard (LEED), Greenguard Gold, PVC free, Formaldehyde free, Halogen free, Pht-halate free, antimicrobials free				
Solar reflectance outside	44%	62%	65%	68%	70%
UV transmission	27%	7%	4%	1%	0%
Light transmission	29%	9%	5%	3%	0%
Openness factor	23%	5%	2%	0%	0%
IR emissivity (metal side)	0.51	0.35	0.29	0.27	0.29
Visual contact according to EN 14501:2005*	4	2	2	0	0
Glare control rating according to EN 14501:2005*	0	3	3	4	4

	Solar Control double glass (Glazing D EN14501:2005)	Glazing performance	816	812	849	878	890	Performance improvement
Light Transmission** LT value	60%		20%	7%	3%	2%	0%	67-100%
Solar heat gain** g-value / SHGC	32%		23%	18%	18%	17%	16%	28-50%
Insulation** U-value (W/m ² K)	1.1		0.9	0.8	0.8	0.8	0.8	18-27%

* All results are based on the measured colour 829 black ** All results are based on the measured colour 000 white

Optical properties are measured according to EN 14500, ISO 9050, ASTM C1371 & EN 410. For more information about technical data, energy savings and worldwide distribution, refer to www.verosol.com. Disclaimer: The technical data is based on average data and is subject to production tolerances. Subject to misprints, errors and technical modifications. All technical details per colour available upon request.

Customer favourites



The colours shown may vary from the supplied fabric due to batch variation in the production process. Please visit www.verosol.com to order samples of your choice. 890 Original is available in the underlined colour numbers.